



# **PREVENT HIV/STDS, VACCINE PREVENTABLE DISEASES AND HEALTHCARE-ASSOCIATED INFECTIONS**

---



# **STDs IN SCHENECTADY COUNTY**

---

# The Effect of STDs on the Population

Source: 2011-2013 Bureau of STD Prevention and Epidemiology Data as of July, 2015



	Schenectady	Capital Region
Number of Gonorrhea cases per year (2013)	141	504
Number of Gonorrhea cases per year, ages 15-19 (2013)	33	104
Number of Chlamydia cases (2013)	705	3,447
Number of Chlamydia cases per year (female)	512	2,446
Number of Chlamydia cases per year , ages 15-19 (female)	184	846
Number of HIV cases per year (2013)	14	68
Number of AIDS deaths per year (2013)	2	15

# STD Indicators and Significance per 100,000 population compared to NYS

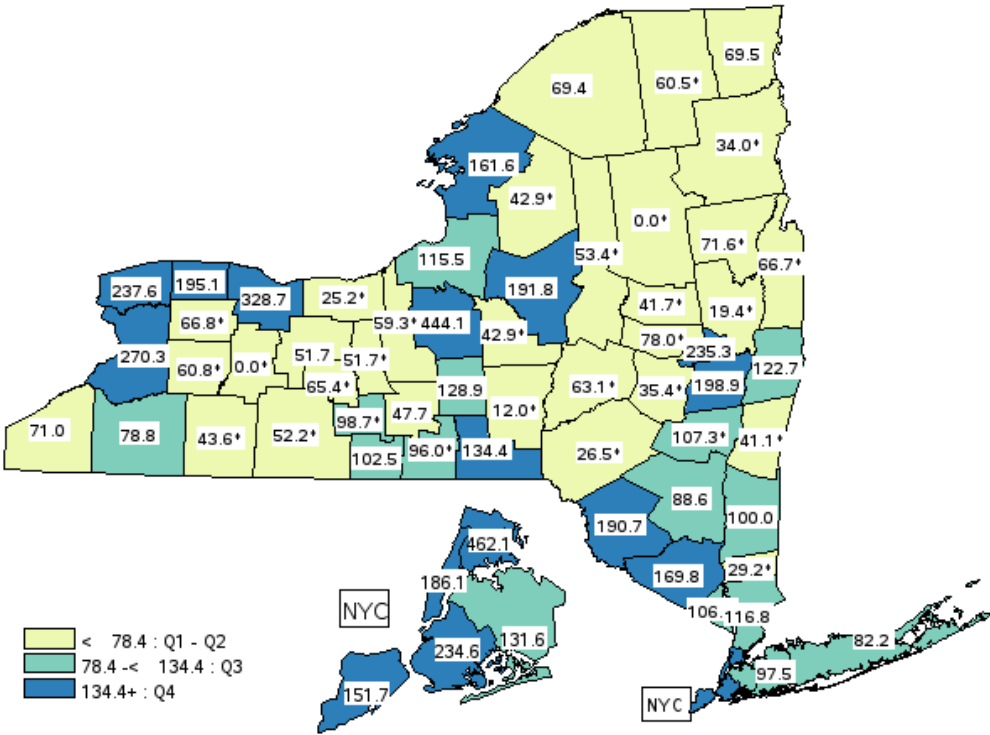
Source: 2011-2013 Bureau of STD Prevention and Epidemiology Data as of July, 2015



	Schenectady		Capital Region		Upstate
<b>Gonorrhea cases rate</b>	77.1	Significantly Higher	54.5	Lower	61.1
<b>Gonorrhea cases rate ages 15-19</b>	266.6	Significantly Higher	177.4	Lower	203.6
<b>Chlamydia cases rate (Females)</b>	633.0	Significantly Higher	488.0	Higher	466.8
<b>Chlamydia cases rate (Males)</b>	272.5	Significantly Higher	210.8	Higher	203.0
<b>HIV Cases Rate (Age-Adjusted)</b>	9.1	Higher	7.0	Lower	7.9
<b>AIDS Mortality (Age-Adjusted)</b>	5.1	Higher	4.4	Lower	4.5

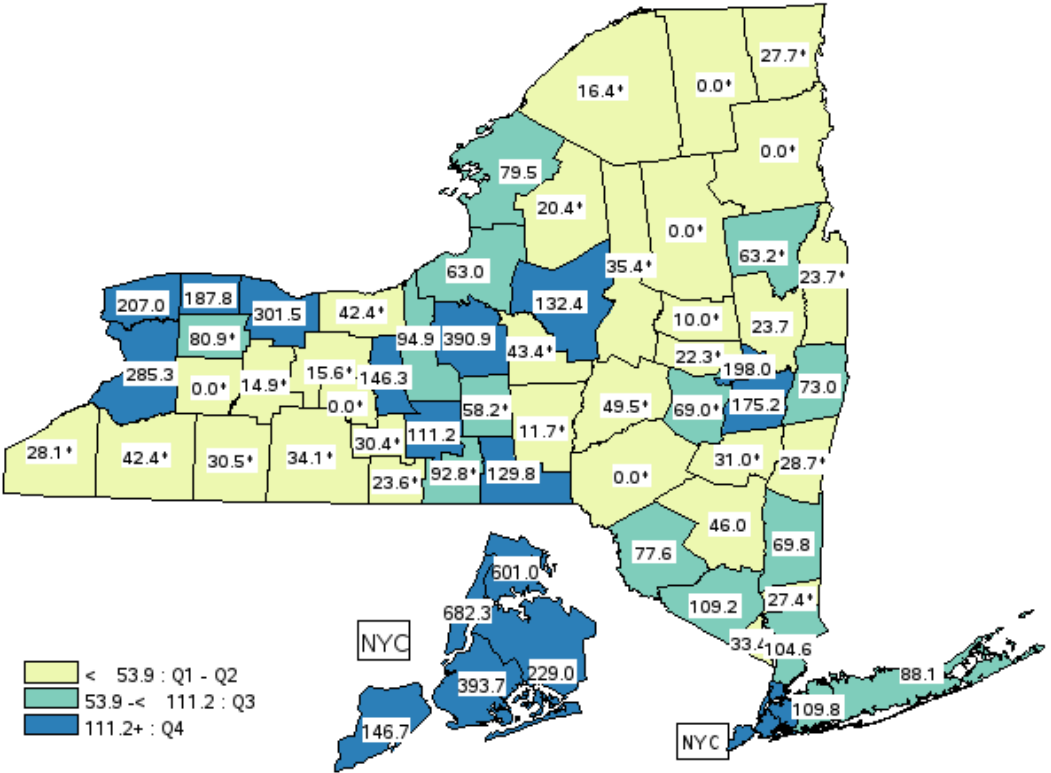
### Gonorrhea Cases (Females), Ages 15-44 (2013)

Data Source: NYS STD Surveillance System data as of January 2015



### Gonorrhea Cases (Males), Ages 15-44 (2013)

Data Source: NYS STD Surveillance System data as of January 2015

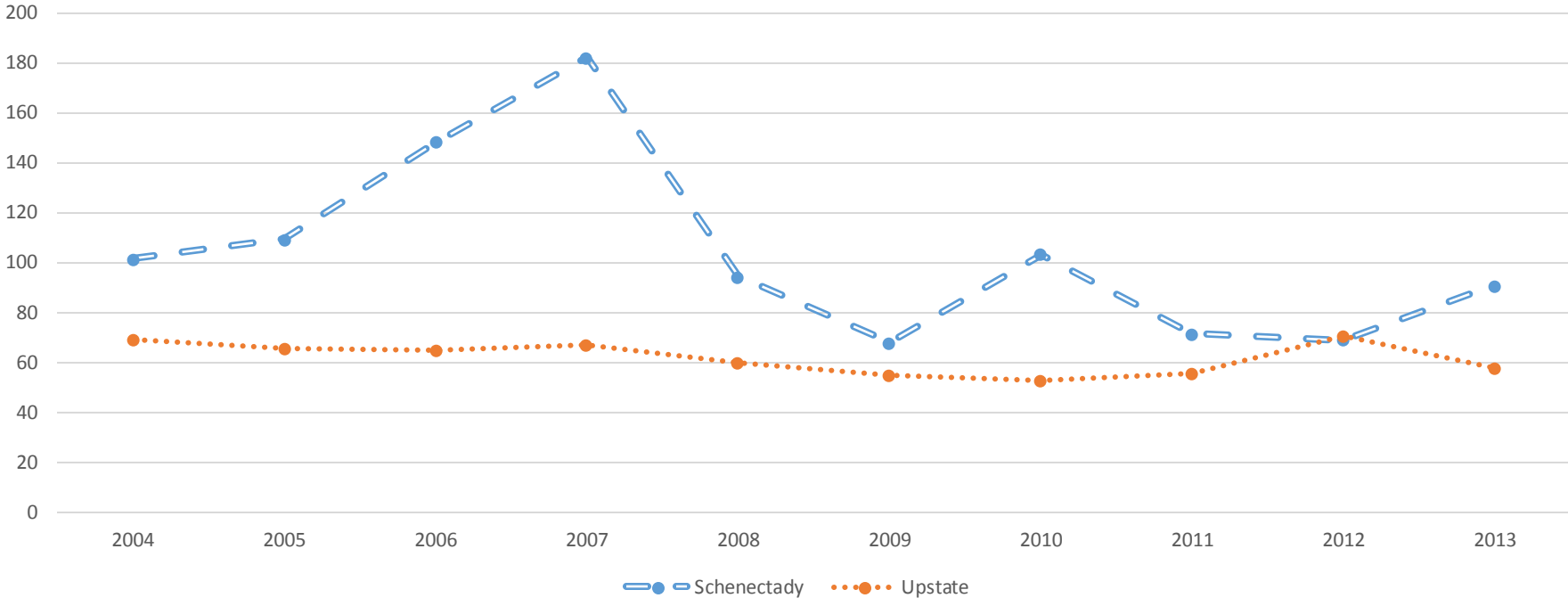






### Gonorrhea Case Rate per 100,000 population (all ages) for NYS (excl. NYC) and Schenectady county, 2004-2013

Source: 2011-2013 Bureau of STD Prevention and Epidemiology Data as of July, 2015



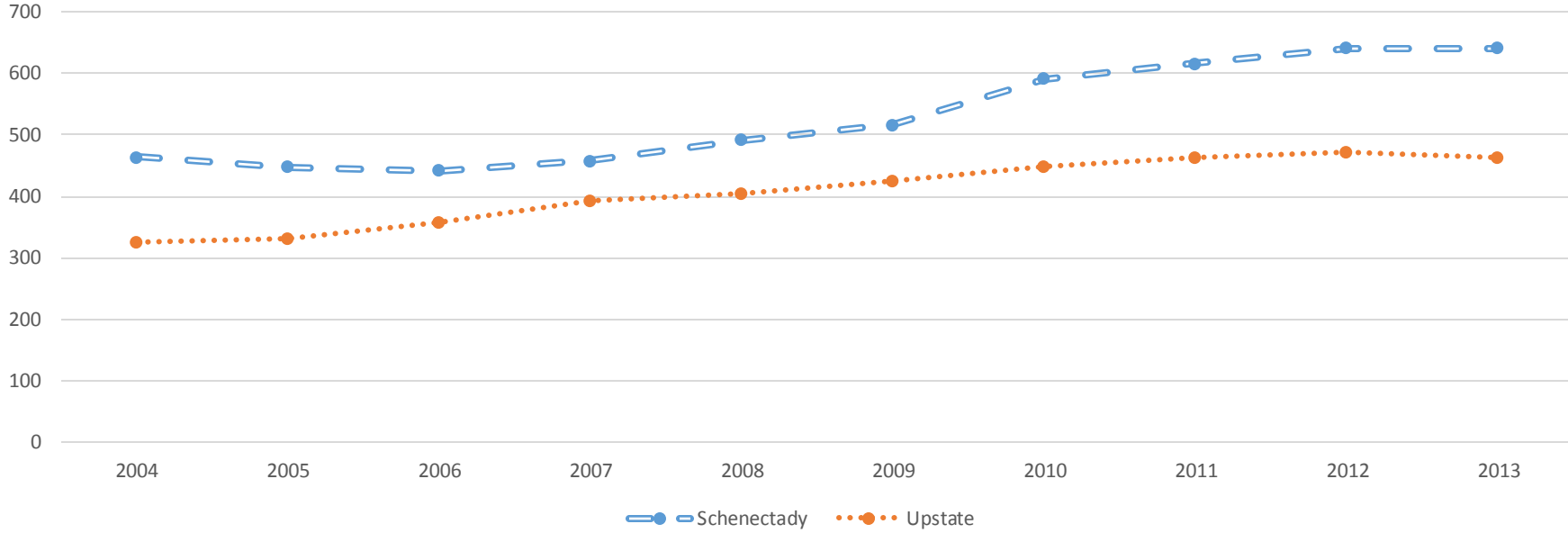
	2004	2005	2006	2007	2008	2009	2010	2011	2012	2013
<b>Schenectady</b>	101.3	109.3	148.2	182.3	94.4	67.7	103.4	71.6	69	90.8
<b>Upstate</b>	69.4	65.8	64.6	67	59.6	54.8	52.8	55.6	70.2	57.4





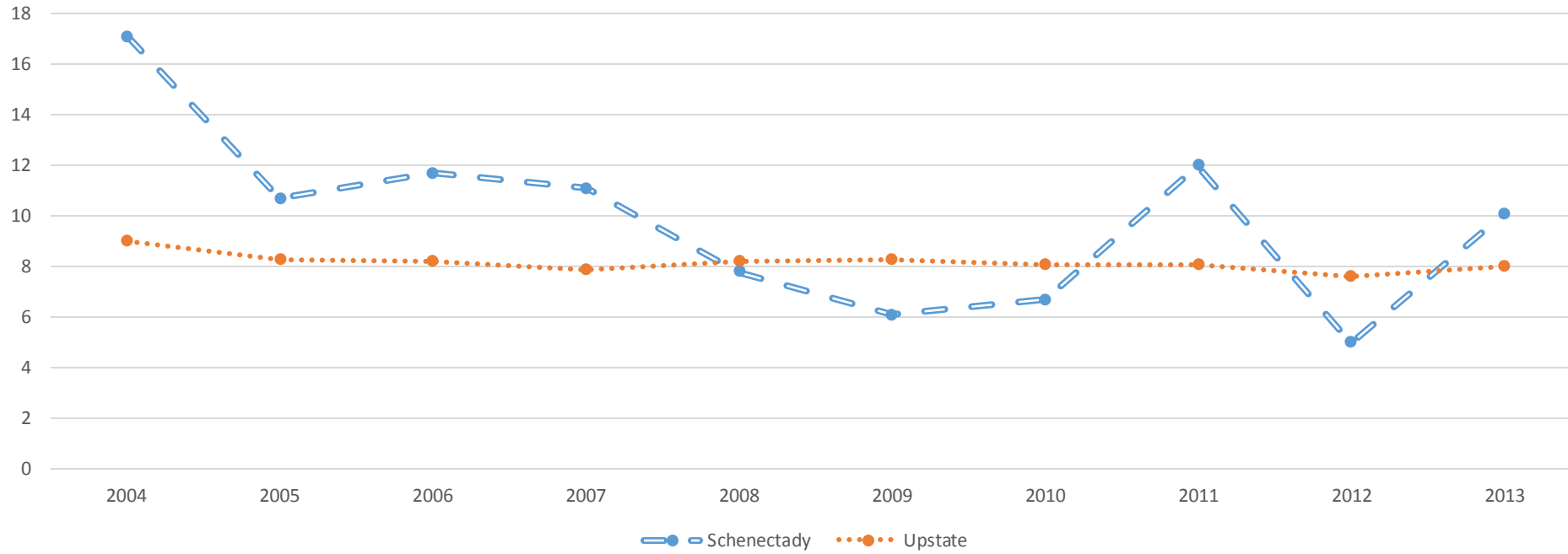
### Chlamydia Case Rate per 100,000 of the female population (all ages) for NYS (excl. NYC) and Schenectady county, 2004-2013

Source: 2011-2013 Bureau of STD Prevention and Epidemiology Data as of July, 2015



	2004	2005	2006	2007	2008	2009	2010	2011	2012	2013
<b>Schenectady</b>	463.5	448.4	441.5	457.5	491.7	517.1	592.2	615.7	641.8	641.7
<b>Upstate</b>	324.3	331.2	358.9	391.6	405.5	423.9	449.2	464.2	473.4	462.7

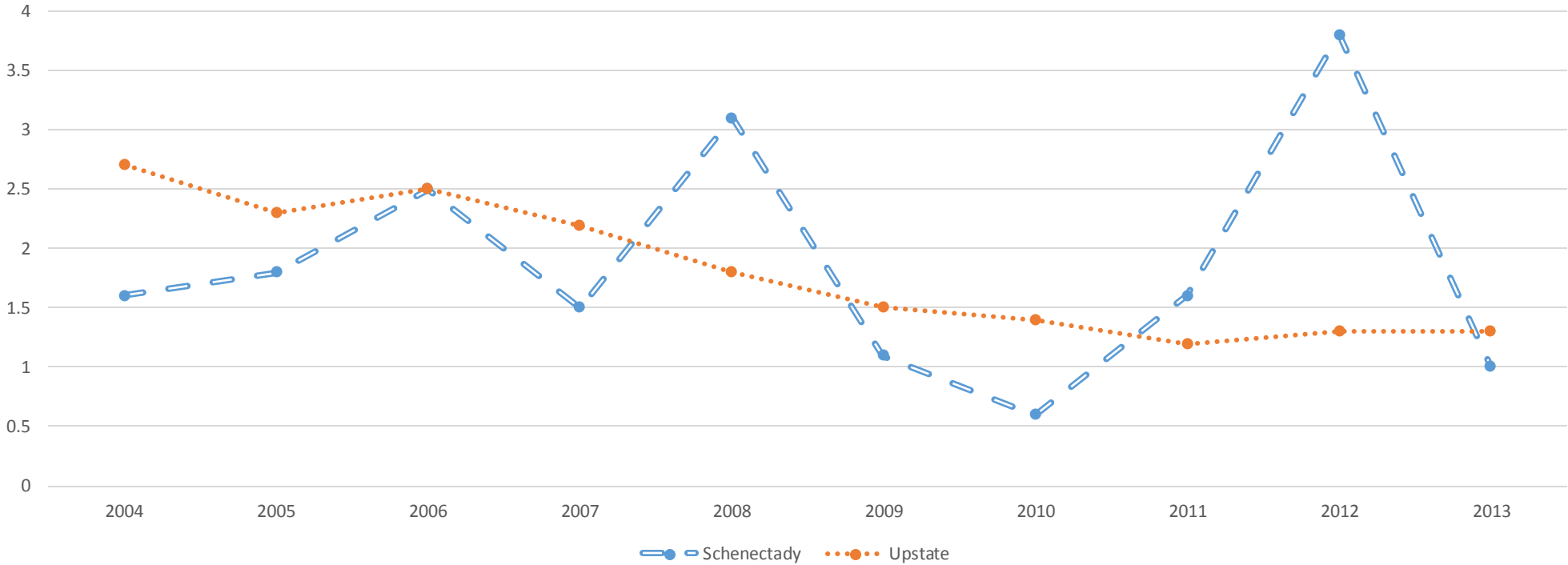
Age-Adjusted HIV Case Rate per 100,000 population (all ages) for NYS (excl. NYC) and Schenectady county, 2004-2013



	2004	2005	2006	2007	2008	2009	2010	2011	2012	2013
<b>Schenectady</b>	17.1	10.7	11.7	11.1	7.8	6.1	6.7	12	5	10.1
<b>Upstate</b>	9	8.3	8.2	7.9	8.2	8.3	8.1	8.1	7.6	8



Age-Adjusted AIDS Mortality Rate per 100,000 population (all ages) for NYS (excl. NYC) and Schenectady county, 2004-2013



	2004	2005	2006	2007	2008	2009	2010	2011	2012	2013
<b>Schenectady</b>	1.6	1.8	2.5	1.5	3.1	1.1	0.6	1.6	3.8	1
<b>Upstate</b>	2.7	2.3	2.5	2.2	1.8	1.5	1.4	1.2	1.3	1.3



# EQUITY

---

# STD Indicators per 100,000 population by Age compared to NYS, excl. NYC

Source: 2011-2013 Bureau of STD Prevention and Epidemiology Data as of July, 2015



<b>Gonorrhea</b>	<b>Schenectady</b>	<b>Capital Region</b>	<b>Upstate</b>
<b>Ages 15-19</b>	266.6	177.4	203.6
<b>All ages</b>	77.1	54.5	61.1

<b>Chlamydia</b>	<b>Schenectady</b>	<b>Capital Region</b>	<b>Upstate</b>
<b>Females (Ages 15-19)</b>	3,698.7	2,637.2	2,387.5
<b>Females (Ages 20-24)</b>	3,696.5	2,681.2	2,743.8
<b>Females (Ages 15-44)</b>	1,667.5	1,290.6	1,220.3
<b>Females (All ages)</b>	633.0	488.0	466.8

# STD Indicators per 100,000 population by Gender compared to NYS, excl. NYC

Source: 2011-2013 Bureau of STD Prevention and Epidemiology Data as of July, 2015



<b>Gonorrhea</b>	<b>Schenectady</b>	<b>Capital Region</b>	<b>Upstate</b>
<b>Females ages 15-44 (2013)</b>	235.3	140.0	149.3
<b>Males 15-44 (2013)</b>	198.0	111.9	129.7

<b>Chlamydia</b>	<b>Schenectady</b>	<b>Capital Region</b>	<b>Upstate</b>
<b>Females (Ages 15-19)</b>	3,698.7	2,637.2	2,387.5
<b>Males (Ages 15-19)</b>	850.0	651.5	608.6
<b>Females (Ages 20-24)</b>	3,696.5	2,681.2	2,743.8
<b>Males (Ages 20-24)</b>	1,513.7	1,055.3	1,089.0
<b>Females (All Ages)</b>	633.0	488.0	466.8
<b>Males (All Ages)</b>	272.5	210.8	203.0

# STDs Summary



Annually, Schenectady County has:

- 705 cases of Chlamydia amongst all ages; 512 to all females and 184 to females 15-19 years old
- 141 cases of Gonorrhea amongst all ages; 33 cases of Gonorrhea amongst 15-19 year olds
- 14 new cases of HIV reported
- 2 deaths resulting from AIDS

# STDs Summary

- Schenectady county has significantly higher rates of Gonorrhea compared to the rest of NYS and fell into the 4<sup>th</sup> Risk Quartile
- Schenectady county had significantly higher male and female Chlamydia rate compared to the rest of NYS and fell into the 4<sup>th</sup> Risk Quartile
- Gonorrhea has seen a general decrease in Schenectady since 2007.
- Female Chlamydia rates have been increasing in Schenectady over the last decade.
- Schenectady falls into the 4<sup>th</sup> Risk Quartile for HIV case rate.
- Schenectady's HIV case rates declined during the first half of the last decade, but increased slightly during the second half.
- Gonorrhea and Chlamydia rates decrease with age, teens having the highest rates.
- Females have higher Gonorrhea and Chlamydia rates when compared to males.





# LYME DISEASE IN SCHENECTADY COUNTY

---





## The Effect of Lyme Disease on the Population

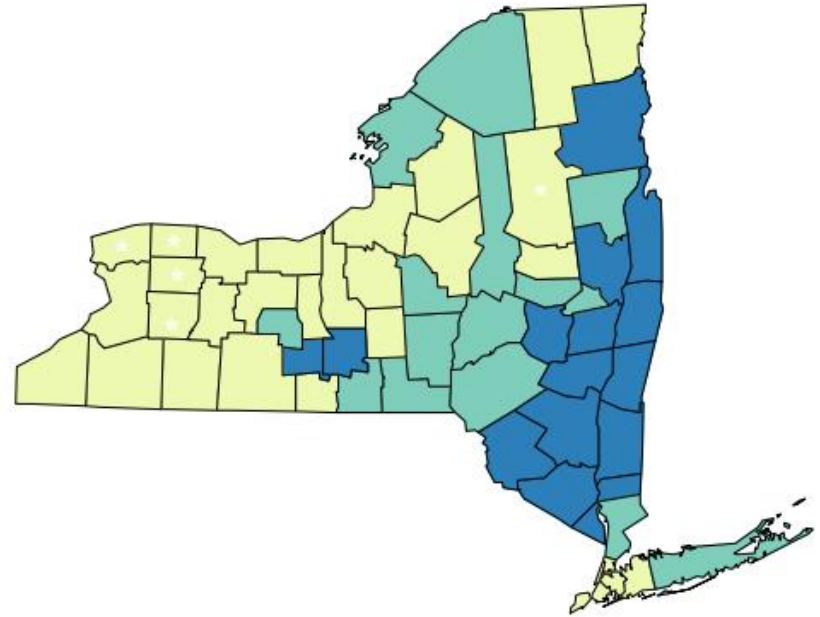
Source:2011-2013 Bureau of Communicable Disease Control Data as of June, 2015

	Schenectady	Capital Region
Number of Lyme Disease cases	57	1,983

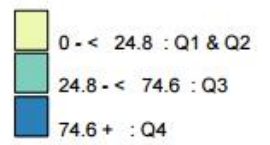
## Lyme Disease Indicators and Significance Compared to NYS, excl. NYC, 2011-2013

	Schenectady	Capital Region	Upstate
Lyme Disease Cases rate per 100,000	36.5	206.8	57.8

# Lyme Disease Case Rate per 100,000 (2011-2013)



Incidence rate  
Counties Are Shaded Based On Quartile Distribution  
(\* Fewer than 10 events in the numerator, therefore the rate is unstable)



Source: 2011-2013 Bureau of Communicable Disease Control Data as of June, 2015

# Lyme Disease Summary



Annually, Schenectady County has:

- 57 cases of Lyme Disease
- Schenectady County has much lower infection rates than those of the Capital Region and of the rest of NY.
- Schenectady County falls into the 3<sup>rd</sup> Risk Quartile for Lyme disease



# **VACCINE-PREVENTABLE DISEASE IN SCHENECTADY COUNTY**

---



## The Effect of Vaccine-Preventable Disease on the Population

	<b>Schenectady</b>	<b>Capital Region</b>
<b>Number of children ages 19-35 months not immunized per year (2013)</b>	717	4,480
<b>Number of females ages 13-17 not immunized for HPV per year (2013)</b>	3,191	18,866
<b>Number of adults ages 65+ not receiving flu vaccine per year (2013-2014)</b>	5,180	33,488

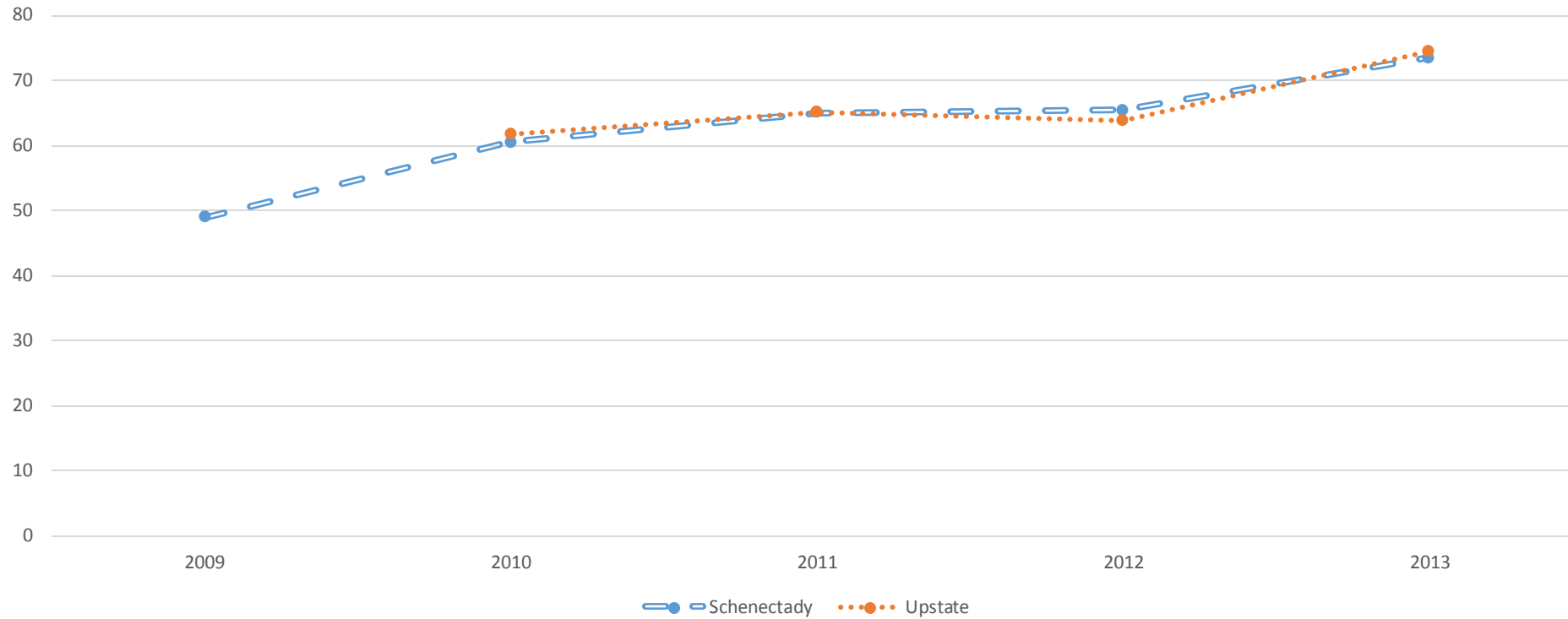
## Vaccine-Preventable Disease Indicators and Significance Compared to NYS (excl. NYC)



	Schenectady		Capital Region		Upstate
<b>Percentage of children with immunizations, 19-35 months of age (2013)</b>	73.5	Significantly Higher	69.5	Higher	60.0
<b>Percentage of females with 3-dose HPV immunization, 13-17 years of age (2013)</b>	37.7	Significantly Higher	35.6	Higher	28.1
<b>Percentage of Adults with flu immunization, ages 65+ (2013-2014)</b>	76.9	Similar	75.8	Lower	76.8



Percentage of Children with Immunization series, Aged 19-35 months (2009-2013)

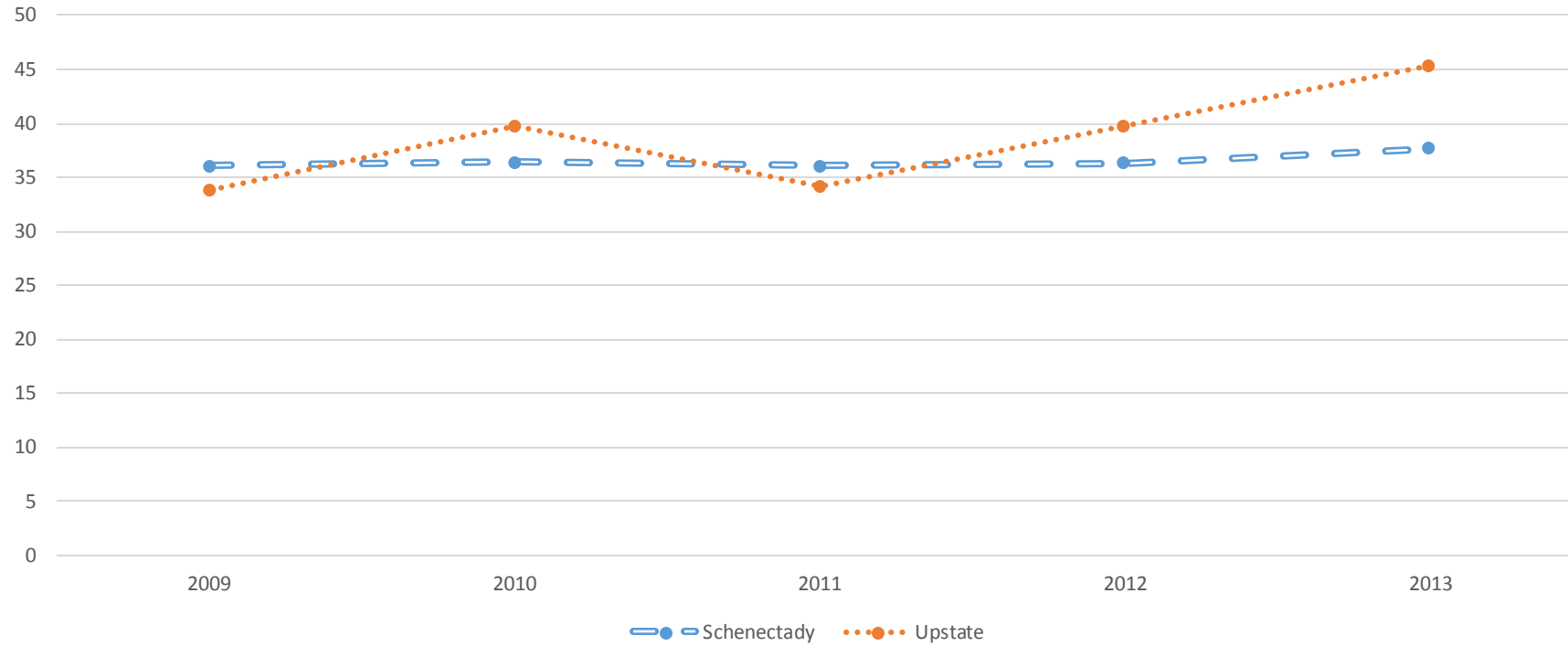


	2009	2010	2011	2012	2013
<b>Schenectady</b>	48.9	60.5	65	65.4	73.5
<b>Upstate</b>	*	61.6	65.1	63.7	74.3

\*Data unavailable for the year 2009 for Upstate



Percentage of Adolescent Females with 3 or more doses of HPV immunization, Aged 13-17 years (2009-2013)



	2009	2010	2011	2012	2013
Schenectady	36.1	36.4	36.1	36.3	37.7
Upstate	33.8	39.7	34.2	39.7	45.4





## Adjusted Percentage of Adults with Flu Immunization ages 65+ for NYS (excl. NYC), Schenectady County



	2003	2008-2009	2013-2014
Schenectady	70.4	76.7	77.2
Capital Region	N/A	N/A	75.8
Upstate	N/A	76.0	77.7

## Vaccine-Preventable Disease Summary



- Schenectady county had significantly higher percentages of children 19-35 months of age who were full immunized when compared to Upstate.
- Schenectady county also had significantly higher percentages of young women ages 13-17 years of age who received HPV immunization when compared to Upstate.
- Schenectady county had similar percentage of adults aged 65 and older who have received the influenza vaccination when compared to Upstate.
- Schenectady showed increasing trends in childhood immunization rates since 2009. HPV immunization rates for the county have had a slightly increasing trend since 2012.
- Schenectady showed a significant increase in flu immunization rates for the 65+ year old population from 2008-2009 to 2013-2014.